



2 & 3 BHK LUXURY APARTMENT



Site Address

## ANIKET HEIGHTS

Nr. Sthapatya Heights, Sardar Patel Ring Road,  
Opp. Gopi Farm, Ognaj, Ahmedabad-380060

Contact No.: **+91 93 75 556 556 | 93 77 556 556**

Email: [biyolainfracon@gmail.com](mailto:biyolainfracon@gmail.com)

RERA - PROJECT REGISTRATION NUMBER

RERA : **PR/GJ/AHMEDABAD/AHMEDABADCITY/AUDA/RAA09559/251221**

Website : [www.gujrera.gujarat.gov.in](http://www.gujrera.gujarat.gov.in)





**"Welcome to the life of your DREAMS"**

**Aniket Heights** is a Spectacular residential only project consisting of  
luxurious **3 BHK** and **2 BHK** apartments.

Modern aesthetic design encourages families to gathers and create memories  
which develops beautiful friendships and lasting bonds.



HERE'S A **REALITY**  
MORE **BEAUTIFUL** THAN YOUR DREAMS.

**ANIKET**  
HEIGHTS  
2 & 3 BHK LUXURY APARTMENT



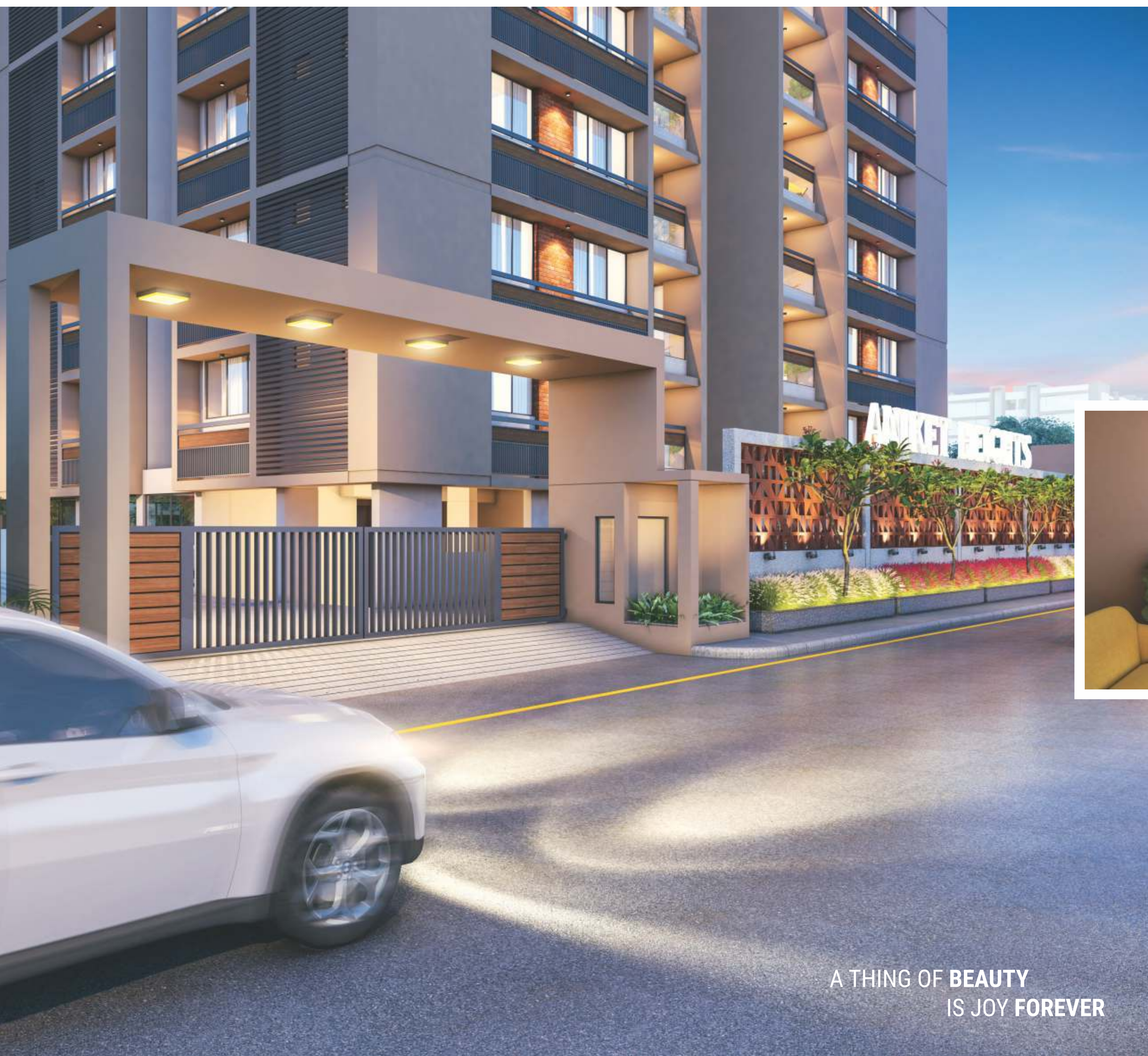




IF YOU EVER BELIEVED IN THE  
**BEAUTY OF YOUR DREAMS...**







A THING OF **BEAUTY**  
IS JOY **FOREVER**







YOUR DREAMS DESERVE TO BE FULFILLED  
DREAMS SHAPED INTO **DREAM HOMES**









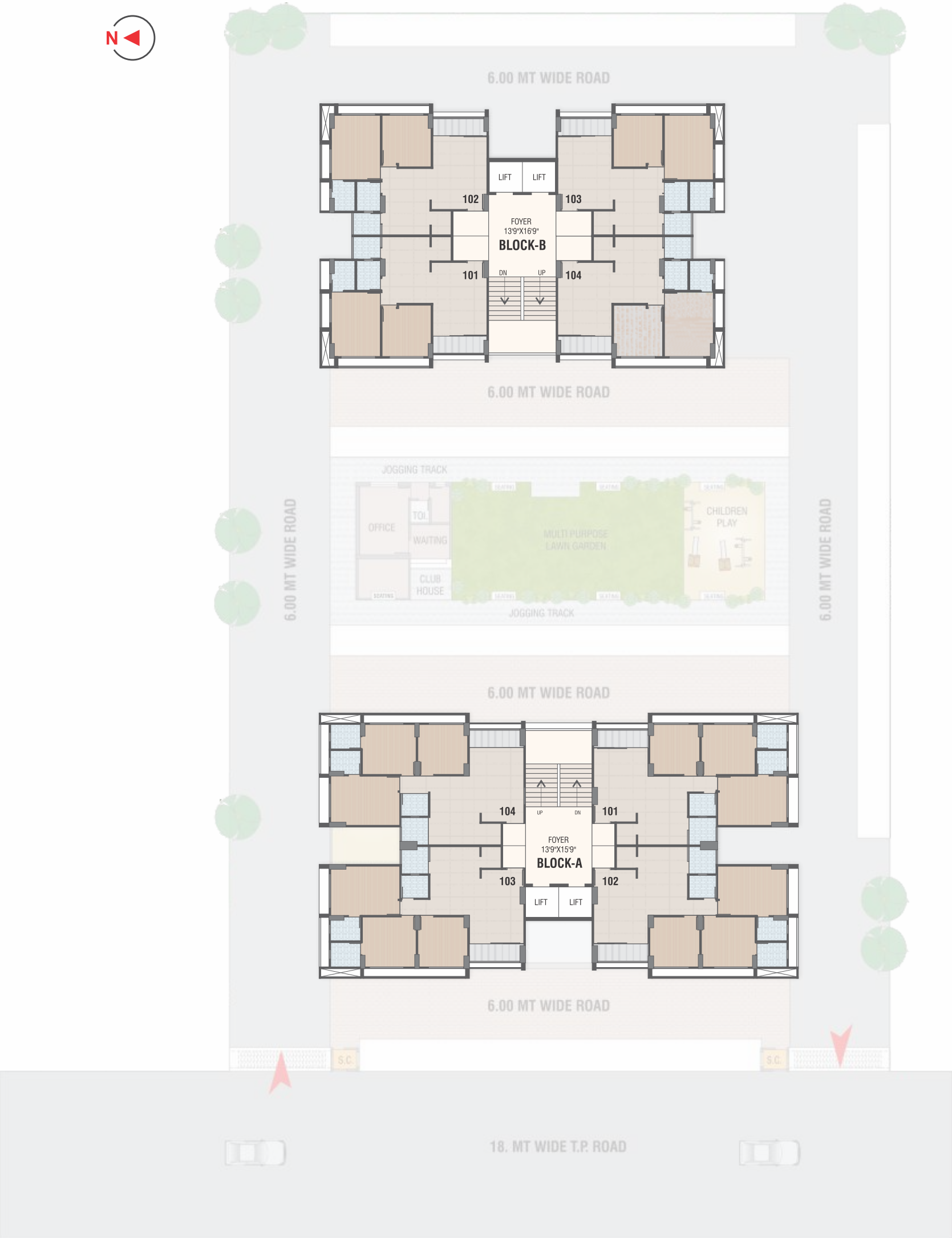




GROUND FLOOR PLAN

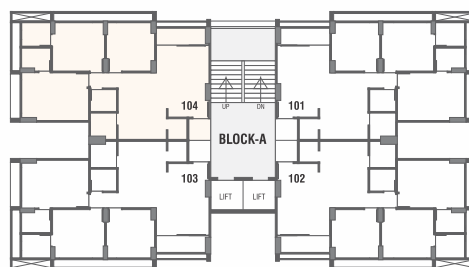


TYPICAL FLOOR PLAN

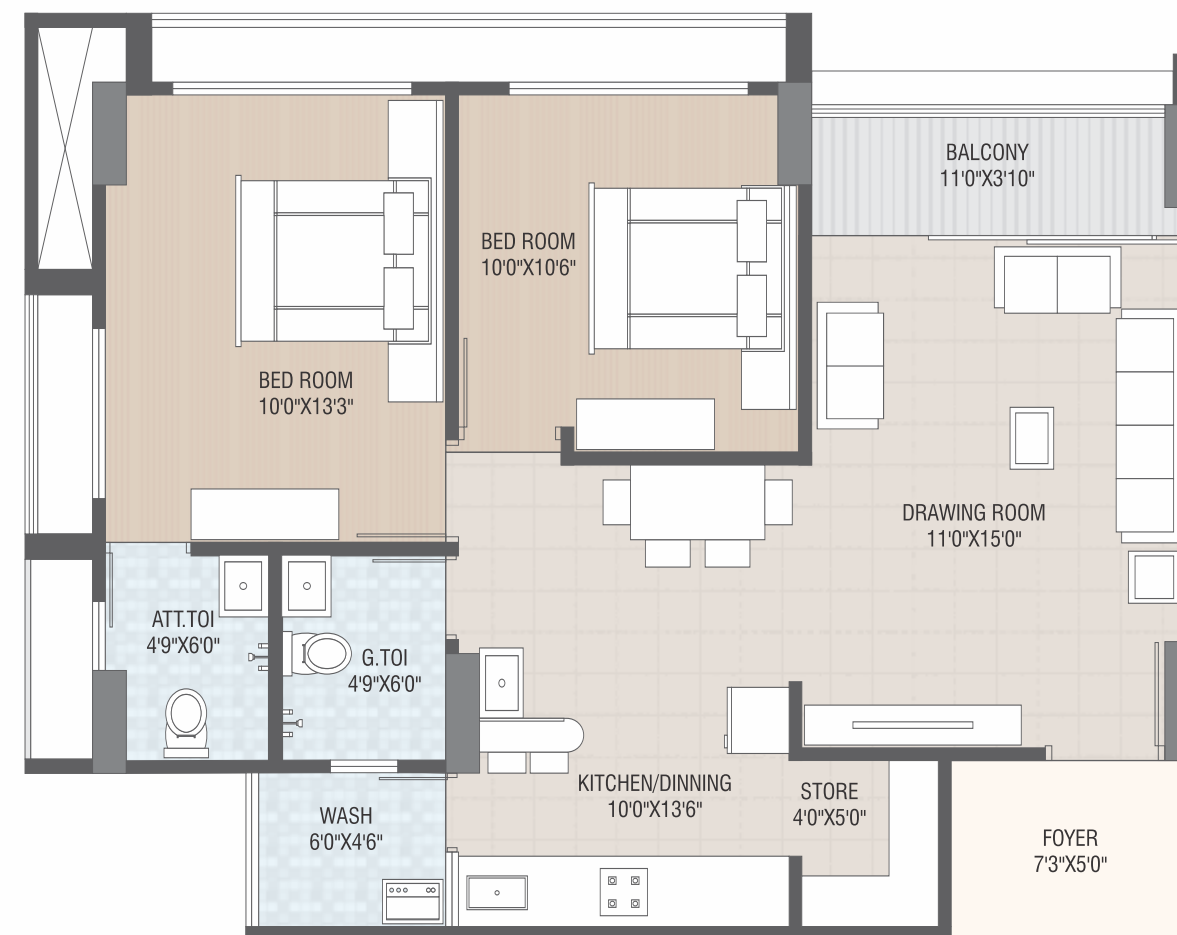
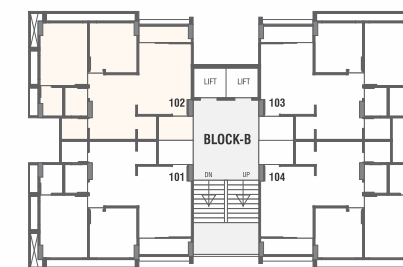




# BLOCK\_ A 3 BHK



# BLOCK\_ B 2 BHK





REDEFINE NEW HEIGHTS  
OF YOUR **STATUS...**



\*Images are for representation purpose only



\*Images are for representation purpose only



\*Images are for representation purpose only



## SPECIFICATION



### RCC

- » Quality controlled earthquake resistant,
- » R.C.C. framed structure.



### FLOORING

- » Vitrified flooring in complete apartment.



### KITCHEN

- » Granite platform with SS sink Decorative tiles dado up to lintel level.



### KITCHEN WASH AREA

- » Kota stone floor with dado of glazed tiles Electric point for washing machine.



### BATHROOMS / PLUMBING

- » C.P fitting or equivalent Sanitary Ware Cera or Equivalent



### DOORS

- » Main Door : Flush doors with Wooden Frames & Laminate finish.
- » Other Door : Flush doors with Wooden Frames.



### SECURITY

- » Security with CCTV surveillance.



### WINDOWS

- » Powder coated aluminum section with good quality glass.



### ELECTRIFICATION

- » Adequate points as per architecture drawings Concealed electrification with good quality ISI copper wire/cable Branded modular switches and accessories and distribution board with MCB & ELCB.



### PAINT

- » Internal walls finished with wall putty.
- » External walls with apex paint.



### LIFT

- » Fully automatic elevators.



### TERRACE

- » With required water proofing on terrace.

## AMENITIES



Attractive Main Gate



Entrance Foyer



CCTV Camera



24X7 Security



Beautiful Garden



Senior Citizen Sitout



Gymnasium



Children Play Area



2 Lift in All Block



24X7 Water Supply



D.G. Backup System



Fire Safety



Street Light



R.C.C. Road



PNG Gas-Pipeline



Basement Parking

## LOCATE US



MEPF



Architect



Structural Engineer



Project By



» All right reserved to Developer for any changes in plan & specification. » GEB, AUDA, Stamp duty, legal charges, VAT, GST Labouress, Narmada water connection & Initial maintenance contribution will be levied extra. » Change in external elevation shall not be permitted Internal chages shall be done only with prior permission and shall be charged extra in advance. » Details & dimensions in brochure are indicative & for the tentative representation only which should not be treated as legal documents. » possession of the apartment shall be given only after full payment. » Any additional charges or duties levied by the Govt/local authorities during ar after the completion of the scheme will be borne by the purchaser. » selling of the unit and sale deed of the unit is only done on the basis of carpet area as per RERA. » Corpet area asper RERA does not indude exterior walls, balcony, wash area, foyer, flowerbed, etc. of the particular apartment.